

Anti-CLEC12A hIgG1 Antibody (H6e7)

Product information

GM-52592AB-10	10 µg
GM-52592AB-100	100 µg
GM-52592AB-1000	1 mg

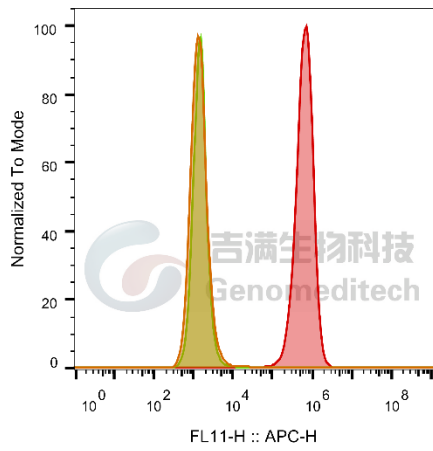
Antibody Information

Species Reactivity	Human
Clone	H6e7
Source/Isotype	Monoclonal human IgG1, κ
Application	Flow cytometry;
Other Names	CD371, CLL-1, CLL1, DCAL-2, MICL
Gene ID	NP_001193939 (human);
Storage	Store at 2-8°C short term (1-2 weeks).Store at ≤ -20°C long term. Avoid repeated freeze-thaw.
Formulation	Phosphate-buffered solution, pH 7.2.
Endotoxin	< 1 EU/mg, determined by LAL gel clotting assay

Data Examples

Flow cytometry

H_CLEC12A HEK-293 Cell Line (Catalog # GM-C27867) was stained with Anti-CLEC12A hlgG1 Antibody (H6e7) or isotype control antibody.






	SampleID	Geometric Mean : FL11-H
	HEK-293 anti-CLEC12A+APC-2nd Ab	1438
	HEK-293 H_CLEC12A H_IgG+APC-2nd Ab	1504
	HEK-293 H_CLEC12A anti-CLEC12A+APC-2nd Ab	6.18E5

Fig. FACS